

www.pwc.com

Cyber Risks in Financial Services

Cyber Risks
October 2014

The PwC logo is located at the bottom left of the page. It consists of the lowercase letters 'pwc' in a bold, black, serif font. A small red horizontal line is positioned above the 'p'.

Agenda

GSISS 2015

Cyber Risks Investments

Shellshock

Targeting cyber security investment in the right places

You can't secure everything

We help you set the right priorities.

- Enterprise security architecture
- Protect what matters
- Strategy, organisation, governance
- Threat intelligence

It's not if but when

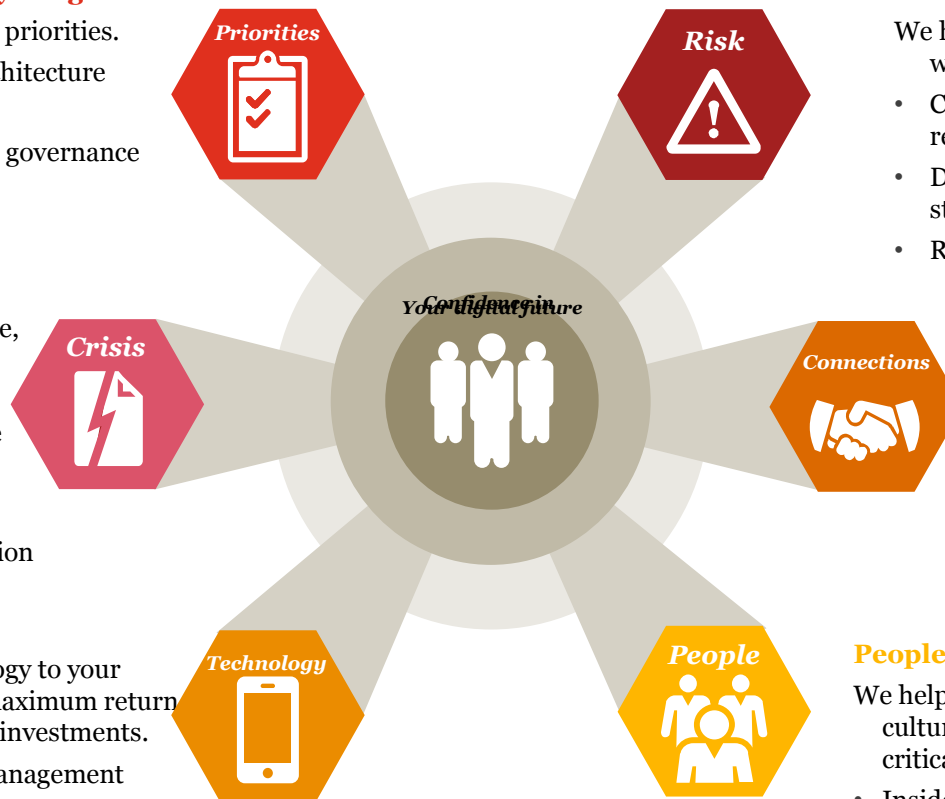
We help you build an intelligence-led defence, enabling rapid cyber response.

- Continuity & resilience
- Crisis management
- Incident response
- Monitoring and detection

Fix the basics

We help you use technology to your advantage, deriving maximum return from your technology investments.

- Identity and access management
- Information technology hygiene
- Information technology, operations technology and consumer technology
- Security intelligence and analytics



Seize the advantage

We help you exploit digital opportunity with confidence.

- Compliance with privacy and regulation
- Digital trust is embedded in the strategy
- Risk management and risk appetite

Their risk is your risk

We help you understand and manage risk in your interconnected business ecosystem.

- Digital channels
- Partner and supplier management
- Robust contracts

People matter

We help you build and maintain a secure culture, where people are aware of their critical security decisions.

- Insider threat management
- People and 'Moments that Matter'
- Security culture and awareness

Shellshock (CVE-2014-6271, ..., 7169)

Characteristics:

- Publicly announced on Sep 24, 2014
- GNU Bourne Again Shell (Bash) – Linux/UNIX
- Bash ver. 1.14 (1994) to 4.3 (2014)
- OS affected - CentOS, Debian, Mac OS X, Red Hat Enterprise & Ubuntu
- Linux-based core routing and switching infrastructure potentially affected?
- Ranks similar to Heartbleed
- Allow user to run any command user desires on a remote system
- Some patches already available
- http://pwc.blogs.com/cyber_security_updates/2014/09/how-can-you-deal-with-shellshock.html

Thank you

Armin Dinar

PwC | Risk Assurance Solutions | Senior Manager

Office: +40.21.225.3311 | Mobile: +40.730.713.386 | Fax:
+40.21.225/3600

Email: armin.dinar@ro.pwc.com

[PricewaterhouseCoopers Audit S.R.L.](#)

[Lakeview Building, 301-311 Barbu Vacarescu St., 020276 Bucharest
Romania](#)

<http://www.pwc.ro>

This publication has been prepared for general guidance on matters of interest only, and does not constitute professional advice. You should not act upon the information contained in this publication without obtaining specific professional advice. No representation or warranty (express or implied) is given as to the accuracy or completeness of the information contained in this publication, and, to the extent permitted by law, [insert legal name of the PwC firm], its members, employees and agents do not accept or assume any liability, responsibility or duty of care for any consequences of you or anyone else acting, or refraining to act, in reliance on the information contained in this publication or for any decision based on it.

© 2014 PwC Audit SRL. All rights reserved. In this document, "PwC" refers to PwC Audit SRL which is a member firm of PricewaterhouseCoopers International Limited, each member firm of which is a separate legal entity.